

Analogue to Pulse Converter v3 APC253

Order Code

APC253 - X XX X X 0

1 = 12Vdc \pm 20%

2 = 10-60Vdc

*) 9 = Other < 63Vdc (Specify).

Input:

01 = 0 - 100mV

02 = 0 - 200mV

03 = 0 - 500mV

04 = 0 - 1V

05 = 0 - 2V

06 = 0 - 5V

07 = 0 - 10

08 = 0 - 100V

09 = 1 - 5V

11 = 0 - 1mA

12 = 0 - 5mA

13 = 0 - 10mA

14 = 0 - 20mA

15 = 0 - 50mA

16 = 4 - 20mA

17 = 10 - 50mA

*) 19 = Other.
(Specify 100Vdc or 100mA max)

Specify required calibration details for the following inputs

- *) 21 = DC voltage up to 2000Vdc.
- *) 22 = DC millivolt, <100mVdc.
- *) 23 = DC voltage, bipolar 10mV to \pm 2kV.
- *) 24 = DC current input 10A max.
- *) 30 = AC voltage 10mV to 500V.
- *) 31 = AC current. 0.5 up to 10A.
- *) 40 = Conductivity
50uS/cm to 100mS/cm (k=1.0)
- *) 41 = Resistance 2W const. current exc.
- *) 42 = Potentiometer 3W voltage excited.
- *) 43 = RTD.
- *) 44 = Thermocouple.
- *) 45 = Frequency sine,
5Hz up to 5kHz Span.
- *) 46 = Frequency pulse,
5Hz up to 5kHz Span.
- *) 47 = Frequency NAMUR/prox. Sensor.
- *) 48 = Frequency contact, 5Hz up to 5kHz Span.
- *) 49 = pH/Electrochemical sensor.
- *) 99 = Other.

Output:

1 = 50Hz Max

2 = 100Hz Max

3 = 250Hz Max

4 = 500Hz Max

5 = 1kHz Max

6 = 2kHz Max

7 = 5kHz Max

8 = 10kHz Max

9 = 3kHz Max

Specify required cal within a range.

Output: 50Hz Max.

Cal : 5 - 45Hz

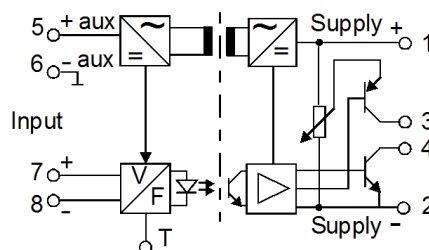
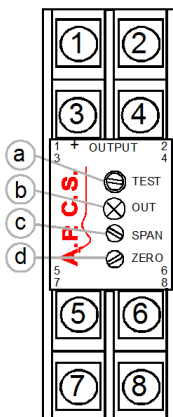
Action:

1 = Direct.

2 = Reverse.



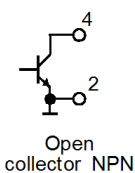
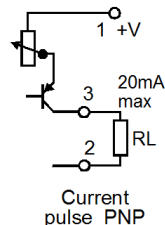
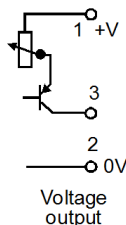
The APC253 is an analogue to pulse conversion module specifically designed to interface to PLC or other systems requiring pulse inputs. The APC253 can be configured for a wide range of process and probe inputs. Output modes available are NPN, PNP, or DC Pulse. Output factory calibrated frequency spans from 10Hz up to 10kHz are available with low scale offsetting available. eg. Input 0 - 10Vdc Output 1 - 2kHz. Final calibration is trimmed using the front accessible zero, span and level adjustments. The front mounted LED pulses at output frequency.



Controls

- a = Output pulse amplitude adjustment.
- b = LED flash at output frequency.
- c = Input span adjustment.
- d = Input zero adjustment.

Output Connection



General Specifications

Size:	Size: 23.5W x 71.5H x 109D (mm)..
Mounting:	Clip for 35mm DIN-Rail.
Housing material:	ABS.
Termination:	Top mounted screw terminals.
Protection class:	IP40 (IP55 Enclosure Opt).
Weight:	0.120 kg.
Protection class:	IP40.
Calibration accuracy:	<0.2%.
Front 'SPAN' adjust:	\pm 15% typical.
Front 'ZERO' adjust:	\pm 10% typical.
Linearity:	<0.1%.
Long term drift:	<0.1%.
Temperature effect:	Typically 0.02% of span per °C.
Operating temperature:	-10...+50°C.
Output frequency range:	10Hz to 10KHz.
Pulse voltage level:	1Vdc (min) up to supply voltage less 2.5Vdc (adjustable).
Output pulse drive:	20mA maximum.
Input/output isolation:	2kV rms.
Open collector output:	30V, 30mA sinking.
Electromagnetic compatibility:	Complies with AS/NZS 4251.1 (EN 50081.1)

= Includes 22Vdc @20mA auxiliary supply on terminal 5.

*) = Price Extra.

In the interest of development and improvement, APCS reserve the right to amend, without notice, details contained in this publication. APCS will accept no legal liability for any errors, omissions or amendments.