

### Description

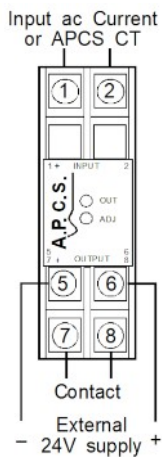
The CM270 provides an economical and compact solution to monitoring of ac loads. When used with the internal CT and the solid state output the CM270 is powered from the incoming AC-current taking only 1.6VA from the driving current. Loads such as motors or heaters can be directly connected to the CM270. The 15 turn threshold adjustment enables precise setting over the entire operating range. The front mounted LED indicates when the input is over the threshold setting. The output can be two NPN transistors or relay contact.

### Solid State Output

The solid state output consists of two PNP transistors suited to operate PLC inputs or external relays. The two outputs give a three state output as follows.

Status	Out 1	Out 2
No current	OFF	OFF.
Low current	OFF	ON
High current	ON	OFF

### Relay Contact Output

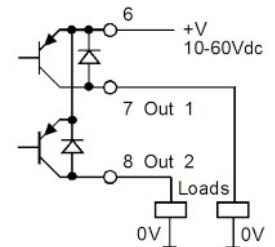
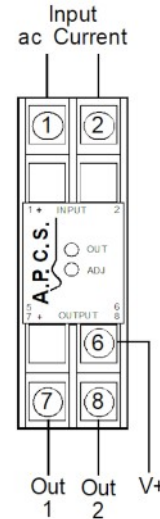


When using the internal relay option an external 24Vdc supply is required.

Also an external APCS transformer (input 5) can be used with a relay contact output.

### Specifications

Size:	23.5W x 71.5H x 109D (mm).
Mounting:	Clip for 35mm DIN-Rail.
Housing material:	ABS.
Connection:	Screw terminals.
Protection class:	IP40 (IP65 Enclosure opt.)
Weight:	0.100 kg.
Repeatability:	0.5%.
Dead band:	10% of range.
Response time:	0.2 Sec.
Isolation:	3kV rms (internal CT).
Overload:	6 x rated current for 10 Seconds.
Inputs:	See ordering guide.
Solid state output:	2 x PNP common emitter open collector 10 - 60VDC / 50mA max.
Relay contact output:	8A, 250Vac resistive. 3.5A, 250Vac inductive. 2kV isolation.
Relay coil:	24V, 0.26W. The unit must be powered from 24V±20% for the relay to function.
Electromagnetic compatibility:	Complies with AS/NZS 4251.1 (EN 50081.1)



### TYPE NO.

**CM270 - X X X X**

#### Power Supply / Input:

- 1 = 1 - 5A ac. (1.6VA)
- 2 = 2 - 16A ac (1.6VA).
- \*) 3 = 50 – 500mA (1VA).
- 4 = 0.1 – 1A (1VA).
- 5 = Use with APCS external current transformer, specify.
- \*) 9 = Other (Specify).

#### Frequency:

- 1 = 50Hz ±10%.
- 2 = 60Hz ±10%.
- 3 = 400Hz ±10%.
- \*) 9 = Other (Specify)

#### Output:

- 1 = 2 x PNP (Standard).
- \*) 2 = 24V relay N/O (8A, 250V resistive)
- \*) 3 = 24V relay N/C (8A, 250V resistive)
- \*) 9 = Other (Specify).
- \*) = Price Extra.

The CM270 is signal powered when used with inputs 1 to 4 and only requires a 24V supply if the relay output is used.

When the CM270 is used with external CT (input 5) then a 24V supply is required.

#### Options:

- 0 = Direct LED Indication.
- \*) 1 = LED Indication coding plug. This allows Reverse direct LED.



DIR

LED on when the input is above the trip setting



REV

LED on when the input is below the trip setting.